

# ACME®

YOUR Favorite Local Supermarket®

**WE PROUDLY SUPPORT  
THE BILLY MOCK FOUNDATION**

**WE LOVE  
LOCAL**

PEOPLE • PLACES • FOOD

**We're Online!**

Visit us at [ACMEmarkets.com](https://www.ACMEmarkets.com) or follow us  
on social media



*Celebrating*

*13 years*

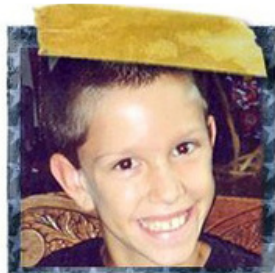


13th Annual  
Billy Mock Foundation  
**GOLF OUTING  
& AUCTION**

OCTOBER 25, 2021  
CONCORD COUNTRY CLUB

All proceeds go to the Billy Mock Foundation





# THE BILLY MOCK FOUNDATION



Billy Mock was a loving Christian with a dynamic enthusiasm for life. His infectiously positive attitude, ever-present smile and vibrant personality literally impacted the lives of thousands of people. Billy began fighting brain cancer in 2005 and touched thousands of lives until his death in 2007 at the age of 13.



The Billy Mock Foundation is a tribute to Billy and his compassion for people, love for life, and passion for sports.

Our mission is simply to "help others" which is achieved through the "Pay it Forward" program which is to encourage people to help others; educational grants; and support of families in need - especially those with a sick child.



The Billy Mock Foundation (a 501 (c) (3) non-profit organization) was established in 2008, on what would have been Billy's 14th birthday, by the Mock Family and friends. It has awarded numerous scholarships, provided financial support to many families in the region, and supported many local groups working within our community to improve the lives of others.



**billymockfoundation.org**



**/billymockfoundation**

## INFORMATION

### Schedule

<b>10:30 am</b>	<b>Registration Opens</b>
<b>11:00 am</b>	<b>Lunch</b>
<b>12:00 pm</b>	<b>Golf</b>
<b>5:00 pm</b>	<b>Cocktail / Dinner / Auction</b>

### Support the Billy Mock Foundation With Amazon Smile



When you shop at Amazon.com, support BMF by shopping at [smile.amazon.com](https://smile.amazon.com) and choose the Billy Mock Foundation as your charity. You can also bookmark or go directly to <https://smile.amazon.com/ch/26-2454620>. There's also an extension for your browser to automatically take you to amazon smile and the Amazon Smile smart phone app.

### Organization

The Billy Mock Foundation, a 501(c)3 foundation, emphasizes community support through assistance to families devastated by illness; the award of educational grants; and our "Pay It Forward" programs helping in the community.

#### Executive Board Members:

William Mock, President  
Peter Mariani, Vice President  
Jodi Park, Treasurer  
Eileen Latini, Secretary

#### Members-at-Large:

Pye Haffey  
Gilda Mock  
Lynn Savon  
Roe Falcone  
Maria Gbur  
Andrea Sheller



Through the generosity of ACME Markets, the Billy Mock Foundation provided Thanksgiving dinners to 30 needy local families.



The Billy Mock Foundation recognized and supported front line workers at both Riddle and Chester County Hospitals during the Covid crisis.

## Families in Need Program

Throughout 2020 - 2021, we assisted eight families experiencing loss of employment, critical illness and life crisis. We provided payments for living expenses, energy bills, car payments, food expenses and medical bills.

During the Thanksgiving holiday season, we arranged for turkeys and Acme gift cards for participants of the Goodwill of Delaware and Delaware County work program. The Christmas season found us adopting three local families struggling with expenses during the holiday season and provided Christmas gifts for the entire family and Acme gift cards to assist with their holiday meal preparations. Families in need through the St. Thomas Caring and Sharing Giving Tree outreach project and providing Christmas presents and clothing for the children.

## Educational Grants Program

In 2021, the Billy Mock Foundation Educational Grant Committee awarded \$9000 in Educational Grants.

Six (6) needs-based grants and one "Simply Helping Others" community service-based grant were awarded to students from the following schools:

- Blessed Virgin Mary School in Darby, PA
- Saint Agnes School in West Chester, PA
- St Thomas the Apostle School in Glen Mills, PA

An institutional grant to Drexel Neumann Academy in Chester was provided.

The Educational Grant Committee funded two (2) Saint Thomas the Apostle Alumni Grants in Billy's memory.

## Pay It Forward Program

The Pay if forward program remains steadfast helping in the community by reaching out to other organizations that carry a similar mission of "simply helping others" within the community.

- **Anna's Place** – A donation including gift cards for food, gym bags, monetary donations, and various required items was made to support their mission to help and service the needs of the less fortunate in Chester, PA.
- **Fierce Foundation** – A donation was made in support of their mission to provide support, guidance and education to patients and families dealing with a rare cancer diagnosis.
- **Judy Marvel Charities** – A donation was made in support of their mission to make an impact in the community by supporting organizations that provide positive opportunities for people and families with special needs.
- **Philadelphia All Star Labor Classic** – A donation was made support High School Seniors with scholarships to be used for college or the trades.
- **City Team Ministries** – A donation was made to support their mission in providing critical services including food, emergency shelter, recovery programs, transitional housing, job and career placement.
- **GoFund Me** -- In 2021 the pay if forward program has contributed to Go Fund me fundraisers to assist with **medical bills for cancer treatment**.



The Billy Mock Foundation annually helps Goodwill families by providing holiday dinners and gifts during the Christmas season.



The Billy Mock Foundation received the Community Partner of the Year awarded by Goodwill of DE. (L-R) Goodwill CEO Colleen Morrone, Gilda & Bill Mock, Yolanda Medina, BMF Families in Need grant recipient & Cheryl Wiechecki-Casino from Goodwill.



# OUR SPONSORS

## Hole Sponsor



The mission of the Mark Dombroski Foundation is to provide funding to organizations that support and promote youth education, athletics, safety, and well-being.

It is the Foundation's desire that other children will know the joy that Mark lived, and that his happy, inclusive, and kind spirit will live on in the lives the Foundation benefits.

<https://www.markdombroskifoundation.org/>

## Skill Hole Sponsor



**BERKSHIRE  
HATHAWAY**  
HomeServices



**Ed Schmitt** - Lic PA & DE  
**Beverly Schmitt** - Lic PA, DE & MD  
**REALTORS®**

**Fox & Roach, REALTORS®**

610.368.1835 Ed Cell

302.530.5210 Bev Cell

610.431.1100 Office

[ed.schmitt@foxroach.com](mailto:ed.schmitt@foxroach.com)

[beverly.schmitt@foxroach.com](mailto:beverly.schmitt@foxroach.com)

[www.EdSchmittTeam.com](http://www.EdSchmittTeam.com)

**A special thank you to Ed and Beverly Schmitt of  
The Ed Schmitt Team at Berkshire Hathaway  
for tonight's flowers and music.**

## Billy's Buddies

- Jerry Francesco
- Santa & Charles Kraft
- Patrick & Gretchen Walsh
- Monica & James Berrodin
- Patricia & Michael Brown
- Ms Peggy Evans
- Roxann & Steven Gariffo
- David and Maria Gbur
- Lisa & John Dombroski
- Gabriella Mock
- Lisa & Richard Maley
- Joe Mariani
- Geraldine Massey
- Marsha & John McCusker
- Mary Elise & Neil McGeehan
- Chuck & Rita Mitchell
- Ann M Schmitt
- Deborah & Glenn Taylor
- Mary Jane & Patrick Wilson
- Jim Cloud

---

## Scoreboard Sponsor

---



**JOHN SAVON, DMD**  
E. ATLANTIC & W. MERCHANT STREETS  
AUDUBON, NJ 08106  
856-546-0734  
TRAINSTATIONDENTAL.COM

FAMILY DENTISTRY  
ORTHODONTICS  
DENTAL IMPLANTS  
INVISALIGN® INVISIBLE BRACES  
PORCELAIN VENEERS  
COSMETIC DENTISTRY  
IN-OFFICE TEETH WHITENING  
DIGITAL X-RAYS

---

## Scoreboard Sponsor

---



**P 484.494.7724 F 484.494.7734 [indpfire.com](http://indpfire.com)**

P.O. BOX 94 ■ 1205-07 4th AVENUE  
LESTER, PA 19029



<http://indpfire.com/>

---

## Scoreboard Sponsor

---



# The Clare Kelly Family

---

## Hole Sponsors

---

Proud Sponsors Of  
The Billy Mock Foundation



**American Floor Systems, Inc.**  
Prospect Park, PA

&

**The Quercetti's**



<https://www.yoosinsurance.com/>

---

## Hole Sponsors

---



<https://www.rbrooksmechanical.com/>



<https://hypointdairy.com/>



---

## Hole Sponsors

---



<https://www.edsisolutions.com/>



LEEDY-NAGELE ASSOCIATES, LLC  
INSURANCE AND RISK MANAGEMENT

Barbara & David Wiechecki







<https://www.terrasolenergies.com/>

---

## Hole Sponsors

---

Saint Thomas CYO

Diane & Robert Quercetti Family

Sue & Dan Croce & Family

Jennifer & Patrick Mariani  
Love from cousins in Apex, NC





"In the Gospels, St. Joseph appears as a strong and courageous man, a working man, yet in his heart we see great tenderness, which is the heart of his task but rather a sign of strength of spirit and a capacity for concern, for compassion, for genuine openness to others, for love."

May 24, 2021  
Billy Mock Foundation  
P.O. Box 845  
Chadds Ford, PA 19317

Dear Friends,

We are very grateful for your "capacity for concern, for compassion, for genuine openness to others" in your generous gift to Anna's Place. That beautiful care St. Joseph showed to Jesus was certainly instrumental in who Jesus became. We believe the goodness and genuine care you show to others plays an important role in the lives of our guests. It is your "capacity for concern" that reminds our guests they are not alone...even after all this time. God continues to bless them with kindness such as yours. We certainly are blessed to continue to fill under Billy's umbrella of care.

During this past year, we have thought of how St. Joseph must have initially responded to God's Message in a dream. No doubt, his initial rejection must have included a moment when he thought—"I don't know if I can do this." We had a similar experience over a year ago when we shifted to providing our guests with food, toiletries, and whatever we could provide to help in such challenging times. We began with a prayer and "genuine openness to others" and tenacity, with no idea how things would be. However, God blessed us with companions on the journey, such as yourself, and over 11,000 hugs later, our guests know they are loved and cared for!

Know that as we continue to journey through the Year of St. Joseph, we thank God for the gift you have been to our guests and your "strength of spirit and capacity for concern" which blesses all of us at Anna's Place. We are grateful for your prayers of gratitude! We hope you all will be able to stop by to say Billy's please...we see his smiling face every day!

Blessings,  
Sister Maggie  
Sister Maggie Cannon, OSF

Sister Cathy  
Sister Cathy McGowan, SSJ

No gifts or services were exchanged for this contribution  
23-13-2343

278 Annie Street  
Chester, PA 19311  
484.661.2000



# Thank you!

National Multiple Sclerosis Society  
Billy Mock Foundation, Inc.  
PO Box 845  
Chadds Ford, PA 19317-0631

February 23, 2021

Dear Friend,

Thank you for your recent gift of \$1,000.00 on 02/18/2021 to 2021 Do It Yourself Nationwide. It's hard to put into words just how much your partnership means.

Your gift will fund essential support, services and advocacy, including our highly skilled MS Navigators who connect people living with MS and those around them to the information and resources they need. Plus, you'll help advance research aimed at ending MS forever. Your impact will change lives and change the world!

- You'll help a senior citizen cut through insurance red tape to finally get the wheelchair he needs.
- You'll enable a mom to learn how to manage her pain so she can live more fully.
- You'll help change laws to give people with MS access to affordable medication.
- You'll fuel the work of MS researchers to discover new treatments and, ultimately, a cure.

People like you, who can envision a world free of MS and want to help achieve it, are fueling progress we never dreamed possible. I hope you feel proud to be part of this historic effort.

Sincerely,  
Tami Casar  
Tami Casar  
NMSS Chief Financial & Operations Officer

P.S. Thank you again for your generous gift. Together we will Breakthrough MS.

real Billy, billy & re mac foundation  
Helpes,  
A short note to thank you in a big way for your generosity. It seems appropriate and loving that Billy helped me pay off a nice portion of my 5th brain surgery. Insurance covers it, but there are always holes in the system. Thanks for lifting the burden while I still recover.  
Pax,  
In Paul tm



That day when evening came, he said to his disciples, "Let us go over to the other side." Leaving the crowd behind, they took him along, just as he was, in the boat. There were also other boats with him. A furious squall came up, and the waves broke over the boat, so that it was nearly swamped. Jesus was in the stern, sleeping on a cushion. The disciples woke him and said to him, "Teacher, don't you care if we drown?" He got up, rebuked the wind and said to the waves, "Quiet! Be still!" Then the wind died down and it was completely calm. He said to his disciples, "Why are you so afraid? Do you still have no faith?" They were terrified and asked each other, "Who is this? Even the wind and the waves obey him!" Mark 4:35-41

Easter, 2020

Dear Friends,

The Gospel passage quoted above initially may seem a strange choice with which to begin an Easter letter. However, this is the passage Pope Francis spoke to the world during Lenten Days and in the midst of the Coronavirus Pandemic, hoping to comfort us with St. Mark's Gospel account of Jesus calming the storm at sea and, more importantly, calming the Apostles.

We must admit that, since the Coronavirus appeared, we also have been at times terrified and, like the Apostles, begged Jesus to calm the storm of this raging illness and bring healing and peace to our world. During these days, as we seek to help feed our sisters and brothers on the west end of Chester, we believe Jesus saves us from drowning through the goodness of so many riding in this boat with us—including you.

As Pope Francis reflected on the story of Jesus calming the seas, he offered the following prayer:

"You are calling on us to seize this time of trial as a time of choosing. We can look to so many exemplary companions for the journey, who, even though fearful, have reacted by giving their lives. This is the force of the Spirit poured out and fashioned in courageous and generous self-sacrifice. It is the life in the Spirit that can redeem, value and demonstrate how our lives are woven together and sustained by ordinary people."

We are grateful you have chosen to companion us at Anna's Place during this difficult and frightening journey. In the midst of all that is happening in our world, you have kept in your prayers and by your actions those who are struggling in untold ways, including lack of food and inability to make rent payments.

We appreciate all of you who have responded to the needs of the materially poor and blessed us with donations of much needed supplies. Amazon gift cards that are being used to purchase food, and grocery gift cards which are being used to buy food which is distributed twice a week at Anna's Place. You have also helped to provide Easter meals and baskets. Most of our guests are not eligible to receive donations at the other food distribution centers in Chester, so we are totally dependent on the goodness and generosity of people like you. You have been the "force of the Spirit" to us, and we are "woven together and sustained" because of your willingness to care for the people of Chester who are dependent on Anna's Place for much needed food.

Normally we would be enclosing an envelope and asking for a donation during the Easter Season; however, you have already helped to calm the seas in Chester through your goodness at Anna's Place. We write to you now simply to thank you and as we journey through these holiest of weeks, be assured of a special place in our Easter prayers! God is good...all the time...ALLELUIA!

Easter Blessings,  
Sister Maggie  
Sister Maggie Cannon, OSF

Cathy  
Sister Cathy McGowan, SSJ



July 10, 2021

Mr. and Mrs. Mock  
Billy Mock Foundation, Inc.  
P.O. Box 845  
Chadds Ford, PA 19317

Dear Mr. and Mrs. Mock,

At DNA we are thrilled that Summer is officially here as it brings so much hope to us as we continue to move forward our summer session. We all know the difficulties and challenges that the last year has brought to so many of us. We are very excited as we look forward to the beauty that unfolds during these months and more importantly, the fact that we are able to be in school with our students and staff each day. It's hard to believe it was a year ago many of us were experiencing very different emotions - fear, apprehension, worry, and anxiety to name a few. As a community at DNA we have been able to continue to hold onto that hope, even in our darkest moments, due to our faith in our mission and in God. These challenges have made us as a community stronger, because we have learned to rely on each other more than ever.

Our students have been thrilled to be at school and truly enjoy learning each day. They thrive with the love and support they receive from our teachers and staff. At DNA they are able to be in class with their friends and they also get to experience learning in a safe, nurturing, and faith-based environment, where we keep our Franciscan values at the front of everything we do. Our students are *happy* when they are at DNA each day because of their ability to grow in such a positive and nurturing environment.

We consider ourselves most thankful for the consistent support of our benefactors who make DNA possible. It is because of your generosity that we are able to inspire hope for our students and their families. In Chester, hope is often hard to come by, especially when it comes to students receiving a quality education. According to state test scores, only 9% of students in Chester Unified public schools are proficient in math and 23% in reading. The high school graduation rate in the District has also dropped from 62% five years ago to 32% last year. Thank you for your donation of \$1,000, which helps us to provide a quality education and for being the hope that is vital to our DNA!

With Appreciation,  
Sister Catherine  
Sister Catherine  
Anne V. Sylvester  
President

Mr. and Mrs. Mock  
Thank you for your generous support of our students and their families. Your donation is a true blessing to our community. We are so grateful for your generosity. Sincerely,  
Sister Catherine

Please keep this as your tax receipt. Your donation is fully tax deductible as far as not received goods or services in connection with the contribution.  
Drexel Neumann Academy Tax ID# 24-080144

Integrating Gospel values with academic excellence in a multicultural environment  
1907 Peter Street  
Chester, PA 19312  
610.622.0228  
www.drexelneumannacademy.net

Dear Mock family,  
Thank you for the scholarship. It is deeply appreciated. I will strive to continue demonstrate the scholarship qualities. It is an honor to carry on Billy's name.  
Love,  
Lilyanna Kuchler

## It's still important to say 'thank you' to front line responders

